



73

Families, Children and Learning

Working with others in the city, taking a whole family approach, to ensure that no one is left behind, enabling a city for all children, young people and vulnerable adults.

**Our annual report for 2017-18
and our plans for 2018-19 and beyond**



**Brighton & Hove
City Council**

Introduction



"I am proud of the work and achievements of the last year, from maintaining high education standards through to increasing our support for care leavers – taking our roles as corporate parents seriously."

Pinaki Ghoshal Executive Director of Families, Children & Learning



"I am looking forward to ensuring the council improves the experiences for adults with learning disabilities even further."

Councillor Clare Moonan Lead Member for Adult Social Care



"Over the coming year I am working closely with services that support young people in the city, ensuring their voice is heard and their needs are met."

Councillor Daniel Chapman Chair of Children, Young People & Skills Committee



Watch our annual report video

Early years



2,135
children attend our
children's centres
and nurseries

673
children take up
their Early Years
Free Entitlement

Families, Children & Learning – what we do

Most families in the city have some interaction with our services, even if they don't realise it. We also provide a range of support to adults with learning disabilities.

Going to school

5,432
children receive
SEND support in
maintained schools
(incl. 1010 EHCPs)

32,270
children attending
school

4,451
pupils have English
as an additional
language

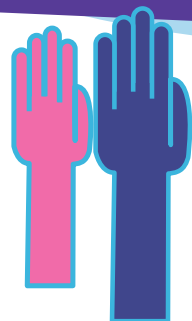


Being safe and happy

1,531
receive family
support (incl.
the national
troubled families
programme)

1,985
children supported
by social work to
be safe (incl. 414
children in care)

30
unaccompanied
asylum seeking
children



96%
get a place at a
preferred school

4,035
children eligible
for free
school meals



Growing up



2,443
young people
benefit from youth
services we deliver
or commission

7,209
young people
attending post 16
providers

259
care leavers aged
between 18 and 25
receive our support

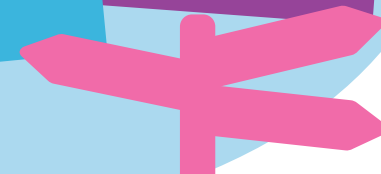


Supporting those with learning disabilities



19
adults supported
into more
independent living

714
adults with
learning disabilities



We have performed well in many areas, including...

Attainment across different key stages continues to be **above the national average**



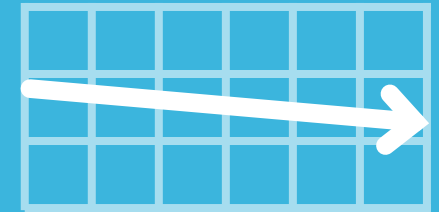
93% of the city's schools are rated **good or outstanding** by Ofsted, with no inadequate schools since 2013



Statements of **special educational needs** have been successfully converted in to **Education, Health and Care plans** by the national deadline

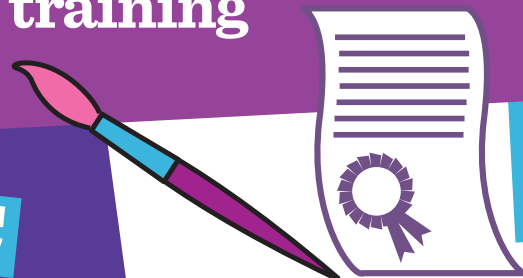


Number of children needing to come in to care has **reduced by 26%**



We have ongoing **high take up of funded nursery places** for 2 year olds and families using the 30 hours free childcare

We are in the **top 30** councils in the country for high numbers of young people in **education employment or training**



Successfully bid for **more up front money** from the government to **support vulnerable families** – called earned autonomy

We have **increased** our number of **in-house foster carers**, meaning children in care get **better coordinated support**



First time entrants in to the youth criminal justice system is the **second lowest in the country**



We have established a strong city-wide **education partnership** with a clear focus on **supporting the disadvantaged**



Our **Move On** project has successfully **supported 19 adults** with learning disabilities to live more independent lives

However, we still face a number of challenges including:

- a reducing budget and increasing demand in some areas
- working to improve education outcomes for disadvantaged young people
- improving the emotional wellbeing of young people
- ensuring there are the right numbers of school places across the city.

We have agreement to deliver new **integrated special education needs & disability hubs** providing sustainable high quality integrated provision and an extended range of support and services for our children & young people

There are **100 apprentices** in the council, including **care leavers** and **adults with learning disabilities**



Listening and acting on feedback and giving thanks



In the last year we have seen the number of complaints stabilise and the number of compliments rise (214, up from 129 last year and 56 the year before)

We learn from both the complaints and the compliments we receive to ensure our services improve.

An example of this is where a parent with a learning disability said they felt a lack of clarity in the communications with them. The conferences were too long and information about them being shared with other professionals caused them embarrassment and distress. In future, the child's social worker and Child Protection Conference Chair will liaise with the parent and their advocate when they plan meetings so that it works better for parent and child.



“It was refreshing to have someone who is there for us. The social worker is there for my son and it is also nice to have someone there for me. The social worker is someone who listens and has been very good... he always answers the phone and will always phone me back.”

“We recognise that our staff and partners work really hard to ensure that people in the city and beyond have the opportunity to fulfil their potential – no matter what context they are living in – and we want to say thank you. This work is vital, is noticed and is appreciated – especially by those receiving our services.”

Pinaki Ghoshal, Executive Director for Families, Children & Learning

“The service is great and it gives a lot of young people like me a fighting chance when it comes to finding a job. I'd like to say thanks for helping me find my current job and the jobs I've had in the past.”

Key decisions made at committee this year

Ensuring the most vulnerable or disadvantaged receive support and that gaps are closed

- Final agreement given to the special school and PRU reorganisation, creating integrated hubs in the city
- Agreed the early years strategy, including focus on disadvantaged
- Supported ongoing improvements to coding and other IT work in schools
- Agreed roll out of Poverty Proofing the School Day project



Improving our services

- Supported ongoing enhancements to mental health services to young people, including establishment of school wellbeing service
- Provided assurance that appropriate actions had been taken following the 2015 social work inspection
- Endorsed work planned to support care leavers up to age 25
- Continued improvement of Ofsted judgements for schools in the city



Supporting young people

- Additional funding agreed in the 2018/19 budget to support a range of children and young people, especially the most vulnerable
- Approved new drug, alcohol and tobacco education guidance, supporting young people to have the best start in life



Whole family working

We know that solving issues should be done as early as possible and with the needs of the whole family (including parents) in mind. This is why we are working closer with services for adults and taking the needs of parents into consideration.



Our future plans

Our work over the next few years is to ensure no one is left behind. In 18/19 we'll be focusing on:

- Taking a whole family approach to create a city for all
- Supporting safe and stable family lives
- Promoting independence, learning and resilience for all disadvantaged families and service users
- Providing access to high quality and appropriate childcare, school and education provision
- Improving our services to be efficient and effective

Creating a city for all

We want all those in the city who work with disadvantaged people to keep their voices and needs at the heart of what they do. This means considering their needs even if they are not easily met.



Partnership working

We know that we cannot solve all problems on our own. We are always looking to work closer with a wide range of partners from schools, to businesses, from universities to local charities.

We will be working closer with the NHS Clinical Commissioning Group from this year.



Tackling educational disadvantage



This is a key priority for us and one way we are working on this is to deliver the poverty proofing the school day project across the city.

Find out more

Brighton & Hove City Council

Brighton & Hove Local Safeguarding Children Board

Brighton & Hove Safeguarding Adults Board

For more information look at **our directorate plan** on our website which sets out our vision, objectives and key actions for the next few years.



Related plans

Brighton & Hove City Council Corporate Plan 2015-2019

Brighton & Hove: The Connected City

For further information

Please contact FCLComms@brighton-hove.gov.uk

 **Twitter** BrightonHoveCC

 **Facebook** BrightonandHoveCityCouncil

