

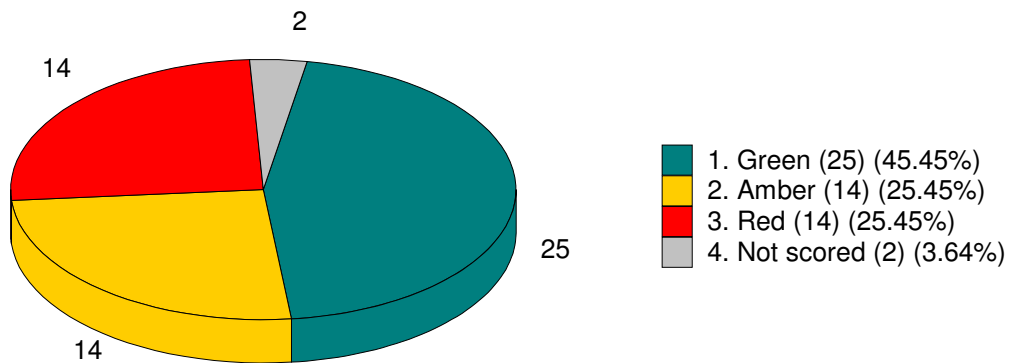


# Children and Young People's Plan 2006-2009

## Quarter 3 Performance Report 2006/7

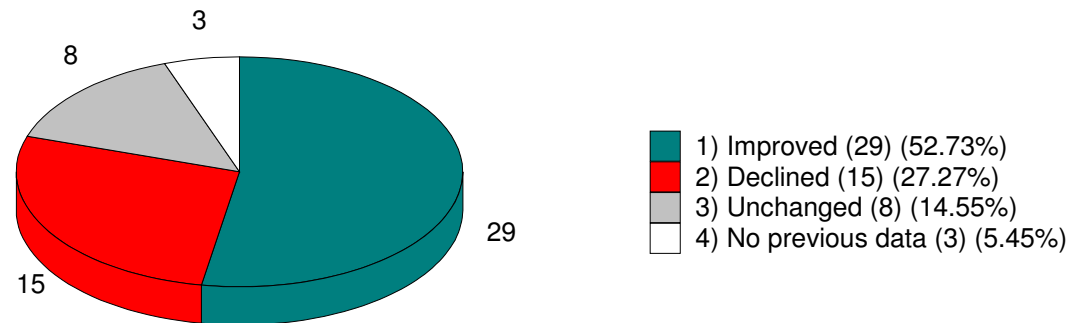


# Success Criteria Performance Summary



## Red/Amber/Green (RAG) Summary

This chart shows the breakdown of the 55 measures using colour coding to illustrate whether the measure is on target (green), off target (amber) or significantly off target (red). There are two measures that are uncoded due to concerns over the quality of the data. These are coloured grey in the report (CYPP4 and CYPP6).



## Improvement Summary

This chart shows the proportion of measures that have improved, declined or remain unchanged, comparing this period with last period (some indicators are monthly, others quarterly). In Q2, 23 measures had improved and 19 declined. Not all measures that improve will improve enough to mean a change of colour in the RAG summary.



# Children and Young People's Plan 2006-2009

## Quarter 3 Performance Report 2006/7

		Latest Available	Improved	YTD Result	YTD Target	Year Target	Comparator	Comment	
<b>01) Be Healthy</b>									
<b>01) Physical health</b>									
◆	CYPP1	% health and dental assessments for LAC on time (CFC19)	Jan 07	No	87 %	81 %	81 %	78 %	
◆	CYPP2	% mothers initiating breastfeeding at delivery (PCT7102)	Dec 06	Yes	78.73 %	82.43 %	82.4 %	76 %	The Infant Feeding Survey 2005 reports an initiation rate in the UK of 76%.
	CYPP3	% of records where no breastfeeding status at initiation has been recorded	Dec 06	Yes	0 %	4 %	4 %		
◆	CYPP4	% of mothers breastfeeding at 6 weeks	Dec 06		55.56 %	65 %	65 %	Confidence in the accuracy of this data is low due to poor data quality (see CYPP5 below). For this reason the measure is not colour coded.	
	CYPP5	% of records where no breastfeeding status at six weeks has been recorded	Dec 06	Yes	64.6 %	0 %	0 %	A small improvement in recording this quarter following decline in 2006. Visits to teams and additional guidance have been provided stressing the importance of accurate recording. The re-organisation of teams and caseloads has been challenging. Meeting arranged between CYPT and PCT performance managers to review situation.	
◆	CYPP6	% of mothers who continue to smoke during pregnancy - smoking at delivery (PCT4254)	Dec 06		9.28 %		13.83 %	Whilst data quality has improved this quarter (see CYPP 7 below), there remains low confidence in this result and for this reason it is not colour coded.	
◆	CYPP7	% maternity records where smoking status not recorded at delivery	Dec 06	Yes	37.4 %	19.97 %	9.96 %	Focus on this issue has resulted in significant improvement down from 53% last quarter. Although this positive trend is expected to continue, following service integration in children's centres and improving links between CYPT, PCT and BSUH staff, potential difficulties with new NHS information systems may undermine progress. Meeting arranged between CYPT and PCT performance managers to review situation	

# Children and Young People's Plan 2006-2009

## Quarter 3 Performance Report 2006/7

		Latest Available	Improved	YTD Result	YTD Target	Year Target	Comparator	Comment
<b>01) Be Healthy</b>								
<b>CYPP8</b>	% quit smoking of pregnant women engaged with the smoking cessation service	Sep 06	Yes	40 %	41 %	41 %		No activity to report in Q3. In October, resources were switched to work in workplaces and the 'Smoke Free Homes Project'. A new resource for pregnant women came on stream in late December. The service has worked with 25 pregnant women since April 2006.
<b>02) Mental and emotional health</b>								
<b>YOTPM1 3b</b>	% of young offenders manifesting non-acute mental health difficulties receiving a specialist CAMHS assessment within 15 working days	Dec 06	Yes	77.27 %	95 %	95 %	94.5 %	Focus on this issue has resulted in a significant improvement up from 64.3%. Performance this quarter was 100% (16/16). There were no acute cases in the period.
<b>03) Sexual Health</b>								
 <b>◆ CYPP20</b>	% of sexually active 15-24 year olds chlamydia screened through Big Screen programme	Dec 06	Yes	9.4 %	11.25 %	15 %		The draft submission to the Health Protection Agency for the calendar year 2006 reports 13.6% against a revised target of 15%, a revision made by the SHA in acknowledgement of a resource shortfall. Resources will be targeted on those at greatest risk and focussed on interventions that address behaviour and motivation.
<b>04) Healthy lifestyles</b>								
 <b>◆ CYPP21</b>	Number of city schools achieving Healthy Schools Status	Dec 06	Yes	10	12	30		REWARDABLE (refers to additional funding from Local Public Service Agreement if 'stretch' targets are reached). The criteria for achieving healthy schools status was recently amended and this has led to two schools now planning to achieve status later in the school year. It is expected that performance will meet the target by the end of the school year.

# Children and Young People's Plan 2006-2009

## Quarter 3 Performance Report 2006/7

		Latest Available	Improved	YTD Result	YTD Target	Year Target	Comparator	Comment
<b>01) Be Healthy</b>								
<b>CYPP29</b>	% quit smoking of young people under 18 engaged with the smoking cessation service	Dec 06	Yes	23.08 %	69 %	69 %		1 out of 3 in the quarter. 13 young people have been engaged with the service since April and 3 quit at 4 weeks. Meeting arranged between CYPT and PCT performance managers to review situation
<b>05) Alcohol &amp; substance misuse</b>								
<b>CYPP31</b>	% of RAG self assessment ratings that are green (against the 24 Strategic Targets)	Dec 06	Yes	69.6 %	62.5 %	65 %		RAG = Red/Amber/Green, with green being "target met" and red being "significantly off target". This measure refers to the 24 strategic targets in the Drug and Alcohol Action Team Young People's Plan. Two more of those targets have moved to green (recording of LAC data, and involving young people in planning) increasing performance from 60.9% in quarter 2 to 69.6% in quarter 3.
<b>CYPP32</b>	Number of young people whose parents or carers problematically use substances receiving therapeutic interventions	Dec 06	Yes	39	35	41		Changed from red in Q2 to green. Referrals have increased as expected with the new Parents or Carers of Children At Risk (POCAR) specialist post.
<b>CYPP33</b>	Number of young people receiving Tier 3 to Tier 4 substance misuse treatment	Dec 06	Yes	84	80	90		
<b>CYPP38</b>	Number of hits to the Sussed About Drink website	Sep 06	Yes	1231	600	1200		Awaiting data for Q3, but Q2 performance of 1231 hits exceeds the Q3 year to date target of 900
<b>YOTPM1 4C</b>	% of young offenders assessed as requiring early substance misuse intervention and treatment receiving them within 10 working days	Dec 06	Same	100 %	85 %	85 %	95.2 %	The comparator figure of 95.2% refers to average performance in 2005/6 across the family of similar YOTs used a benchmark for our performance

## 02) Stay Safe

### 06) Effective child protection

# Children and Young People's Plan 2006-2009

## Quarter 3 Performance Report 2006/7

		Latest Available	Improved	YTD Result	YTD Target	Year Target	Comparator	Comment
<b>02) Stay Safe</b>								
◆ <b>BV162</b>	% of child protection reviews on time (CF C20)	Jan 07	Same	99.1 %	100 %	100 %	100 %	109 out of 110 children were reviewed on time. However, one late review is disappointing given recent improvement and installation of new monitoring systems. This has been the focus of significant attention by senior managers and additional systems will be put in place to improve coordination between area teams and the central Independent Review Officers team
<b>CFA3</b>	% re-registrations on the child protection register (CFA3)	Jan 07	Yes	14.1 %	12 %	12 %	14 %	Performance remains stable and is "good". Will remain the focus of attention as an indicator of the efficacy of family support services following acute/targeted intervention
<b>CFC21</b>	Duration on the child protection register	Jan 07	No	6 %	9 %	9 %	6 %	This refers to children who have been de-registered this rolling year and who were on the register for 2 years or more. Current performance is good, but future trend difficult to predict
<b>CFC64</b>	% of core assessments that were completed within 35 working days of their commencement	Jan 07	Yes	82.58 %	75 %	75 %	63 %	Recent improvement reflects management decision to focus on this area of work following feedback from JAR. Improvement likely to be an early benefit of reorganisation into area teams.
<b>08) Safe from bullying, victimisation and crime</b>								
◆ <b>CYPP50</b>	% of schools completing termly summaries of reports of racist incidents	Dec 06	No	79 %	75 %	100 %		58 out of 73 schools returned the forms within timescales, 6 less than the previous term. A new measure reporting the level of racist incidents will be considered for inclusion in the success criteria next year.
◆ <b>CYPP51</b>	Number of police recorded crimes against victims under 18 years old	Dec 06	No	1337	1482	1972		This measure aims to encourage reporting of crime by young victims. However there is debate about the appropriateness of this

# Children and Young People's Plan 2006-2009

## Quarter 3 Performance Report 2006/7

		Latest Available	Improved	YTD Result	YTD Target	Year Target	Comparator	Comment	
<b>02) Stay Safe</b>									
								indicator and it will be re-considered as part of CYPP review. There has been a minor delay on the launch of the children and young people's safety website.	
<b>09) Safeguard the most vulnerable</b>									
◆	<b>BV163</b>	Looked after children adopted during the year as a % of the number of children looked after for 6 months or more (CF C23)	Jan 07	Yes	10.5 %	9 %	9 %	9.5 %	
◆	<b>BV49</b>	% of LAC with 3 or more placements during the year (CF A1)	Jan 07	Yes	16.1 %	15 %	15 %	14 %	Completion of a LAC Commissioning Strategy is a priority following recommendations by an external consultant and the 2006 JAR. The strategy will address critical issues affecting this cohort (between 67 and 69 children) including decision making at the point of entry into care and unplanned emergency placements
◆	<b>CFD78</b>	LAC under 16 living in same placement for at least two years or placed for adoption	Jan 07	Same	63 %	67 %	67 %		
<b>10) Support parents and carers</b>									
	<b>CYPP55</b>	Number of families involved in Family Group Conferences	Dec 06	Yes	28	33	44		Year to date referrals are up from 31 Apr-Dec 2005 to 50 Apr-Dec 2006. The service expects to meet the target of 44 FGCs for the year.
	<b>CYPP56</b>	% of cases where children and young people remain living with their families or communities following family group conference	Dec 06	No	86 %	85 %	85 %		

# Children and Young People's Plan 2006-2009

## Quarter 3 Performance Report 2006/7

		Latest Available	Improved	YTD Result	YTD Target	Year Target	Comparator	Comment
<b>02) Stay Safe</b>								
CYPP57	% of family group conferences that include the participation of the child or young person (aged 5 or over) according to their needs and wishes	Dec 06	Same	100 %	100 %	100 %		
<b>03) Enjoy and Achieve</b>								
<b>11) Early years</b>								
CYPP65	Number of children aged 0-4 engaged in museum activities (e.g. Early Years sessions)	Dec 06	Yes	1487	1275	1900		Work in children's centres, nurseries and reception classes in schools has been possible since October with a new member of staff, leading to a very healthy result, well above target.
<b>12) Attend and enjoy school</b>								
◆ BV159	% of permanently excluded pupils provided with alternative tuition of 21 hours or more	Jan 07	No	92.61 %	100 %	100 %		All pupils received 21+ hours in January, however 2 of the 15 pupils concerned previously received less than 21 hrs, making their average hrs per week below target
◆ BV45	% of half days missed due to total absence in secondary schools maintained by the local authority	Jul 06	Yes	8.72 %	7.9 %	7.9 %	7.87 %	REWARDABLE (refers to additional funding from Local Public Service Agreement if 'stretch' targets are reached). Tightened DfES coding this year makes it less likely we will hit the annual target. All schools now have attendance action plans and there is targeted EWS support. This issue is now the subject of close attention between the CYPT and Head teachers, building on success of joined up working in respect of permanent school exclusions.
◆ BV46	% of half days missed due to total absence in primary schools maintained by the local authority	Jul 06	Yes	6.55 %	5.4 %	5.4 %	5.4 %	REWARDABLE (refers to additional funding from Local Public Service Agreement if 'stretch' targets are reached). Tightened DfES coding this year makes it less likely we



# Children and Young People's Plan 2006-2009

## Quarter 3 Performance Report 2006/7

		Latest Available	Improved	YTD Result	YTD Target	Year Target	Comparator	Comment
<b>03) Enjoy and Achieve</b>								
◆ <b>CYPP68</b>	The total number of permanent exclusions	Jan 07	Yes	8	16	35		will hit the annual target. All schools now have attendance action plans and there is targeted EWS support. This issue is now the subject of close attention between the CYPT and Head teachers, building on success of joined up working in respect of permanent school exclusions.
◆ <b>CYPP69</b>	The total number of fixed term exclusions	Jan 07	No	1227	974	2104		A very significant improvement resulting from a new process where schools are asked to contact the LA prior to issuing a permanent exclusion, enabling exploration of alternative support packages. 15 permanent exclusions had been issued by this point in the previous school year. This reflects effective joint working between the CYPT and schools, including a new strategic approach to behaviour and special educational needs which is expected to have a wider impact (see BV45/46)
<b>13) Education appropriate to needs</b>								
◆ <b>BV43a</b>	% SEN statements excluding exceptions	Jan 07	Same	97.53 %	93 %	93 %	100 %	8 out of 8 statements without exceptions were completed on time
◆ <b>BV43b</b>	% SEN statements including exceptions	Jan 07	No	76.7 %	80 %	80 %	90.2 %	2 out of 10 statements had exceptions which were both over time due to late health reports. The local authority is in constant contact with health to encourage timely

# Children and Young People's Plan 2006-2009

## Quarter 3 Performance Report 2006/7

		Latest Available	Improved	YTD Result	YTD Target	Year Target	Comparator	Comment	
<b>03) Enjoy and Achieve</b>									
								reports	
	<b>CYPP73</b>	% of primary schools involved in the Planning and Review Meeting (PARM) process	Dec 06	Same	100 %	100 %	100 %		
<b>15) Out of hours learning and recreation</b>									
	<b>CYPP83</b>	Number of primary schools with access to the 8-6 extended school offer	Sep 06	Yes	22	19	23	Awaiting Q3 data	
	<b>CYPP84</b>	Number of secondary and special schools with access to the 8-6 extended school offer	Sep 06	Yes	3	3	3	Awaiting Q3 data	
◆	<b>CYPP85</b>	% of young people 13-19 have contact with the Youth Service	Jun 06		6.56 %	6.25 %	25 %	Q3 data not yet available. An interim database solution is currently being tested. The Youth Service has confirmed it will be able to report on the best value measures for 2006/7 and will use the new database from April.	
<b>04) Make a Positive Contribution</b>									
<b>16) Children and young people in decision making</b>									
◆	<b>CFC63</b>	% of looked after children participating in their reviews	Jan 07	Yes	86.9 %	91.5 %	91.5 %	89 %	Performance is acceptable, but there is room for improvement. The Independent Reviewing Officer team & the Youth Advocacy project are examining potential for joint initiatives to consolidate & improve performance
	<b>CYPP90</b>	% of schools with a school council	Dec 06	Same	100 %	100 %	100 %		
	<b>CYPP91</b>	Number of secondary schools participating in the secondary network	Dec 06	Yes	7	9	9	The network meets in the spring term and will do some work on good practice indicators supported by young people from the Youth Parliament.	

# Children and Young People's Plan 2006-2009

## Quarter 3 Performance Report 2006/7

		Latest Available	Improved	YTD Result	YTD Target	Year Target	Comparator	Comment
<b>04) Make a Positive Contribution</b>								
CYPP92	Number of schools with student governors from the 2005 baseline	Dec 06	Same	2	4	4		Two other schools have structured opportunities for governors to meet with student representatives
<b>18) Parents and carers in decision making</b>								
CYPP95	% of parent/carer places taken on the 8 community cluster steering committees	Dec 06	No	18.75 %	75 %	100 %		A parent involvement worker started work in the West in January and one will start in the East in April. Governance arrangements for children's centres are being reviewed in the light of proposals for CYPT Cluster groups.
<b>19) Reducing anti-social and criminal behaviour</b>								
◆ CYPP98	Number of first time entrants into the youth justice system	Jan 07	Yes	386	303	364		This indicator is significantly off the Youth Justice Board set target and is not likely to improve. Low level incidents in schools and other settings tend to be dealt with by recourse to the police who are required to charge through the Offenders Brought to Justice (OBTJ) policy framework.
<b>20) Children and young people participate in communities</b>								
◆ CYPP400	% of active library borrowers aged 0-19	Jan 07	No	30.8 %	32.6 %	32.6 %		
<b>05) Achieve Economic Wellbeing</b>								
<b>21) Young people in further education, training and employment</b>								
▣ ◆ CYPP106	% of children and young people not in education, employment or training (EET)	Jan 07	No	11.3 %	8.4 %	7.8 %	12 %	Further deterioration is of concern. Following discussion at DMT it is still expected that existing improvement plans, and formation of area teams, will have a positive impact. This will be carefully monitored. In addition we are benchmarking with other authorities in the Southeast who have achieved improvement

# Children and Young People's Plan 2006-2009

## Quarter 3 Performance Report 2006/7

		Latest Available	Improved	YTD Result	YTD Target	Year Target	Comparator	Comment	
<b>05) Achieve Economic Wellbeing</b>									
								in performance	
◆	<b>CYPP107</b>	% of records where EET status unknown	Jan 07	Yes	4.76 %	5 %	7.3 %		
◆	<b>CYPP108</b>	% of teenage mothers aged 16-19 who are known to Connexions	Dec 06	No	73.3 %	63.25 %	65 %	38.4 %	
◆	<b>CYPP111</b>	% of young offenders in EET at end of intervention	Jan 07	No	63.33 %	90 %	90 %	72.3 %	Since 2002, the number of young offenders has almost doubled, with a 21% rise from 2005 to 2006. One cause in this rise is the quick recourse to the police by some schools and other settings and the onus on the police to charge through the Offenders Brought to Justice (OBTJ) policy framework. Furthermore, in 2006 the definition as to what counts as suitable EET has tightened and this has had a negative effect. Also see commentary on CYPP106 above.
	<b>CYPP115</b>	% of teenage mothers in employment, education or training	Dec 06	No	16.4 %	20 %		34.3 %	As CYPP 108 above shows, we are in contact with a relatively high proportion of teenage mothers compared to other areas. As unknowns reduce and we contact the hard to reach, performance worsens. And of course worsening NEET overall will be reflected in less teenager mothers in EET.
<b>25) Children and young people out of poverty</b>									
	<b>CYPP112</b>	Number of contacts received or made by the Children's Information Service	Dec 06	No	14569	12867		17155	
☞	<b>CYPP113</b>	Maintain the stock of Ofsted registered childcare places	Dec 06	Yes	7247	6689		6689	